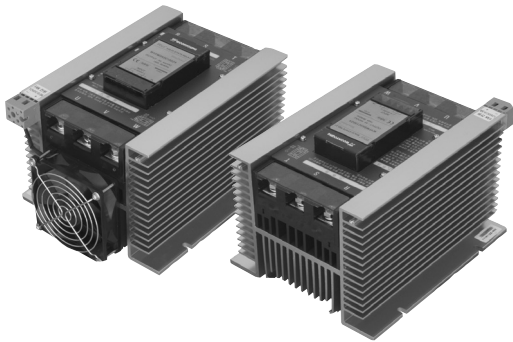


SOLID STATE RELAY(SSR)

WYES®
무접점전자릴레이

3Ø WYFM3H AC440V 60A~150A (AC/AC Type)

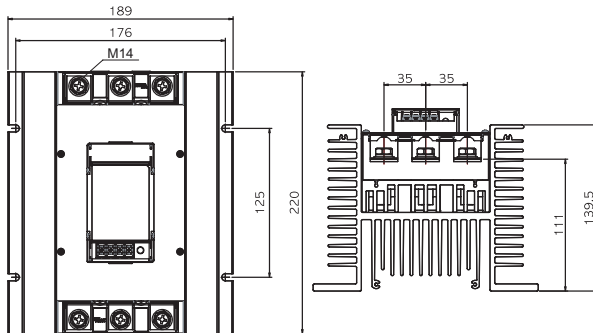


● 방열판 일체형 (SSR/FAN/Heat Sink Type)

FAN 부착형 방열판 삼상 일체형으로 AC90~480V, 60~150A의 대용량 제품으로 자체 방열을 설계하여 편리하게 사용할 수 있도록 일체화시킨 일체형 SSR 입니다.

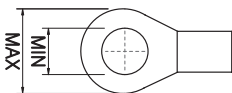
This integral type SSR with fan and heat sink is a product of large capacity of AC90~480V, 60~150A. This SSR has designed self heat sink without attaching to ensure convenient use.

● Dimension



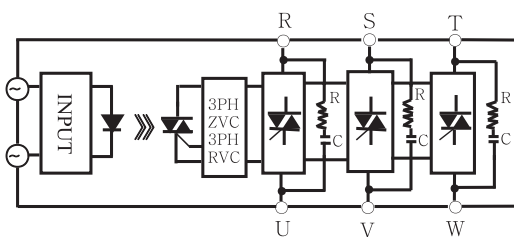
60A는 FAN 미부착, 80A 이상은 FAN 부착
Install Fan of over 80A
FAN : AC220V, *option : AC110V, DC12 or 24V

● Terminal



Input Ter : Max 6.2, Min 3
Output Ter : Max 20, Min 8

● Block Diagram

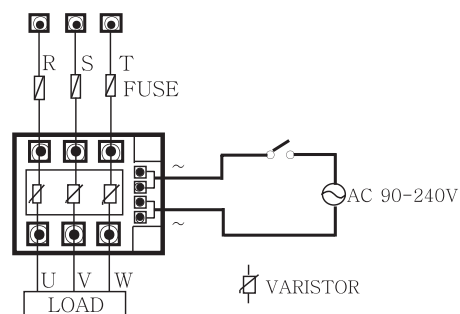


* 3PH ZVC : 3PH ZERO CROSS VOLTAGE CIRCUIT
* 3PH RVC : 3PH RANDOM CROSS VOLTAGE CIRCUIT

● Specifications

MODEL		WYFM3H3C60 / 80 / 100 / 150Z40 WYFM3H3C60 / 80 / 100 / 150R40			
O U T P U T	ITEM				
	Rated voltage	440VAC			
	Voltage range	90 ~ 480VAC			
	Non repetitive peak voltage	1600V			
	Rated load current	60A	80A	100A	150A
	Frequency	50 / 60Hz			
	Peak surge current	1300A	1750A	1950A	2550A
	leakage current	10mA			
	Contact voltage drop	1.95V	1.8V	1.8V	1.8V
I N P U T	Minimum operating current	1.0A			
	Maximum input voltage	240VAC			
	Input voltage range	90 ~ 240VAC			
	Input current	16mA±3mA(240VAC)			
	Minimum operating voltage	85VAC			
G E N E R A L	Turn off voltage	20VAC			
	Dielectric withstand	2000VAC / rms / 1Min			
	Insulation resistance	DC 500V / 100MΩ			
	Response time	R40, Z40 : 30±1ms			
	Circuit control	Z40 : Zero cross type R40 : Random cross type			
	Operating temperature	-10 ~ +60°C			
	Storage temperature	-20 ~ +80°C			
	Weight	5.6kg			

● Application Circuit



트랜스포머
REACTOR
무접점전자릴레이
SSR
전력조정기
TPR
스위칭파워
SMP
노이즈 필터
H/F
하모닉 필터
서지보호기
SPD
보호계전기
RELAY
누전경보기
ELD=GF
ZCT
영상변류기
METER
계기용변성기
CT=VT
SHUNT=FA