

SOLID STATE RELAY(SSR)

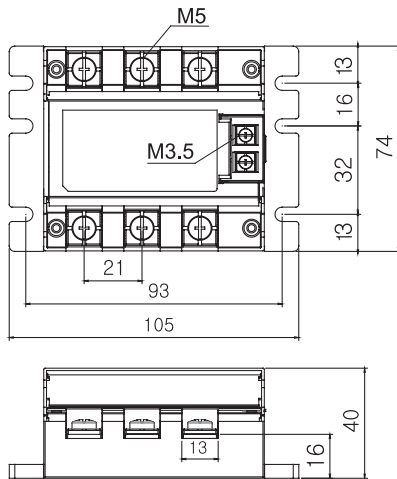
3Ø WYL3G AC220V 10A~80A (DC/AC, AC/AC Type)



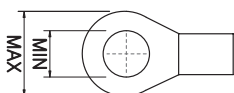
Metal
Bonding
Process



Dimension



Terminal



Input Ter : Max 7, Min 3.5
Output Ter : Max 12, Min 5

경제형(Economy Type)

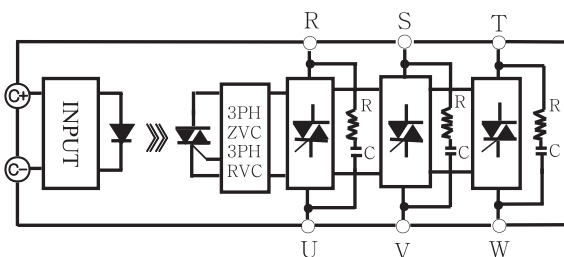
본 제품 시리즈는 경제형으로 제품의 높이를 SLIM화하여 타 제품보다 약 10mm가량 낮게 제작된 SSR로 보호커버 및 외형의 디자인을 보다 세련되게 제작되었으며 고신뢰성 부품을 선정하여 전기적 내환경을 강화한 제품으로 AC90~240V, 10~80A의 용량을 가지고 있으며 입력측에 LED 표시장치가 있는 경제형 SSR입니다.

These product series are economic SSR types. The product height has been reduced by approximately 10mm compared with that of other products where the design of the protective cover and the external view have been made in a more sophisticated style. This product featuring electric and environmental resistance reinforced by using highly reliable parts carries a capacity of AC90~240V, 10~80A. It is an economic type SSR equipped with LED according to input control.

Specifications

ITEM		MODEL	WYL3G3C10/15/20/25/30/40Z4 WYL3G3C50/60/80Z4					WYL3G3C10/15/20/25/30/40Z40 WYL3G3C50/60/80Z40				
			WYL3G3C10/15/20/25/30/40R4 WYL3G3C50/60/80R4					WYL3G3C10/15/20/25/30/40R40 WYL3G3C50/60/80R40				
O U T P U T	Rated voltage	220VAC										
	Voltage range	90 ~ 240VAC										
	Non repetitive peak voltage	600VAC										
	Rated load current	10A	15A	20A	25A	30A	40A	50A	60A	80A		
	Frequency	50 / 60Hz										
	Peak surge current	125A	160A	300A	300A	315A	315A	350A	400A	450A		
	leakage current	10mA										
	Contact voltage drop	1.5V	1.7V	1.8V	1.8V	1.8V	1.8V	2.0V	2.5V	3.0V		
	Minimum operating current	1.0A										
I N P U T	Maximum input voltage	32VDC					240VAC					
	Input voltage range	4 ~ 32VDC					90 ~ 240VAC					
	Input current	10±3(mA)					16mA(MAX)					
	Minimum operating voltage	3.0VDC					85VAC					
	Turn off voltage	1.4VDC					20VAC					
G E N E R A L	Dielectric withstand	2000VAC / rms / 1Min										
	Insulation resistance	DC 500V / 100MΩ										
	Response time	R4 : 1±1ms Z4 : 8.3±1ms R40, Z40 : 30±1ms										
	Circuit control	Z40, Z4 : Zero cross type R40, R4 : Random cross type										
	Operating temperature	-10 ~ +60℃										
	Storage temperature	-20 ~ +80℃										
	Weight	0.4kg										

Block Diagram



* 3PH ZVC : 3PH ZERO CROSS VOLTAGE CIRCUIT
* 3PH RVC : 3PH RANDOM CROSS VOLTAGE CIRCUIT

Application Circuit

